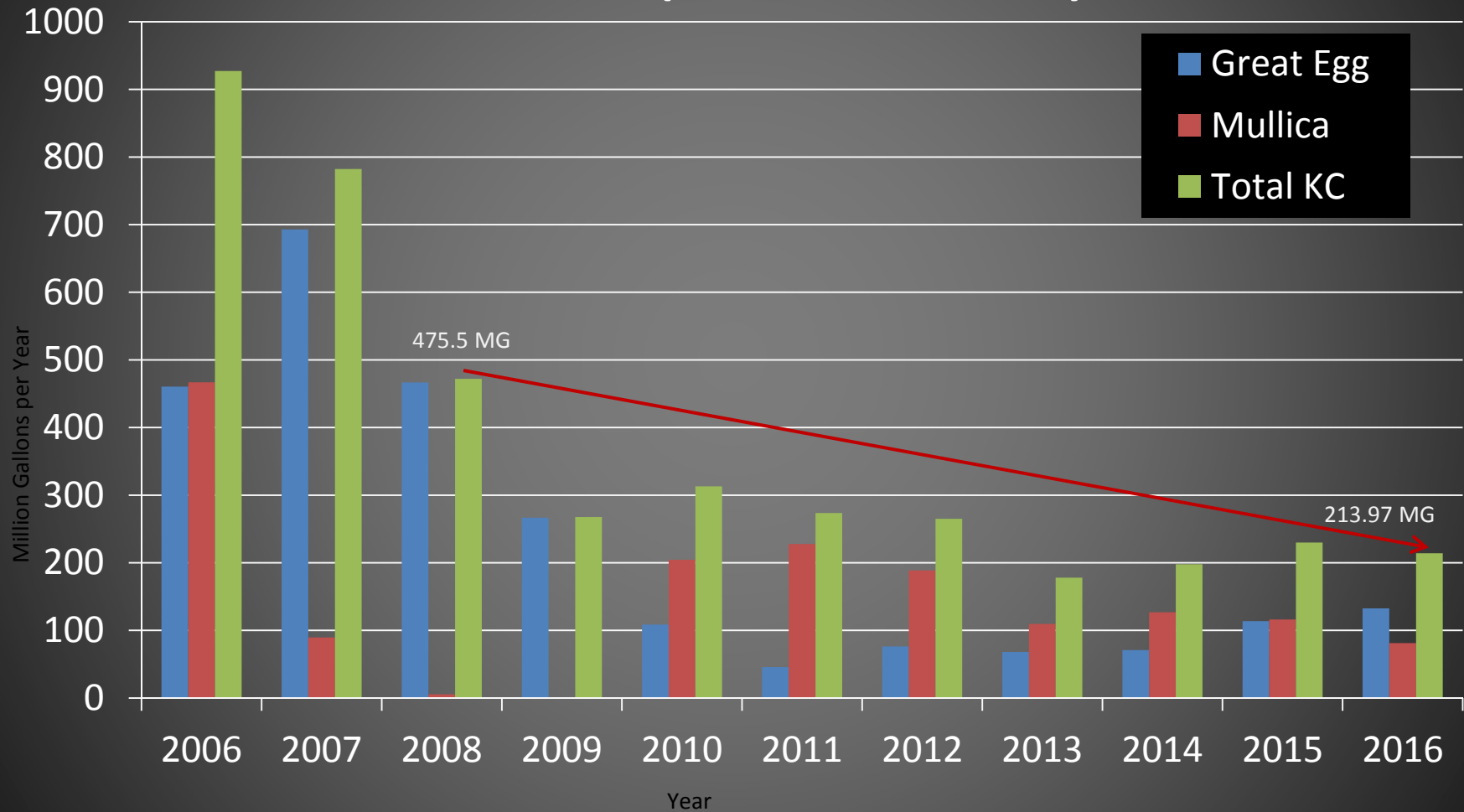


# First Amendment to the Winslow-CCMUA MOU

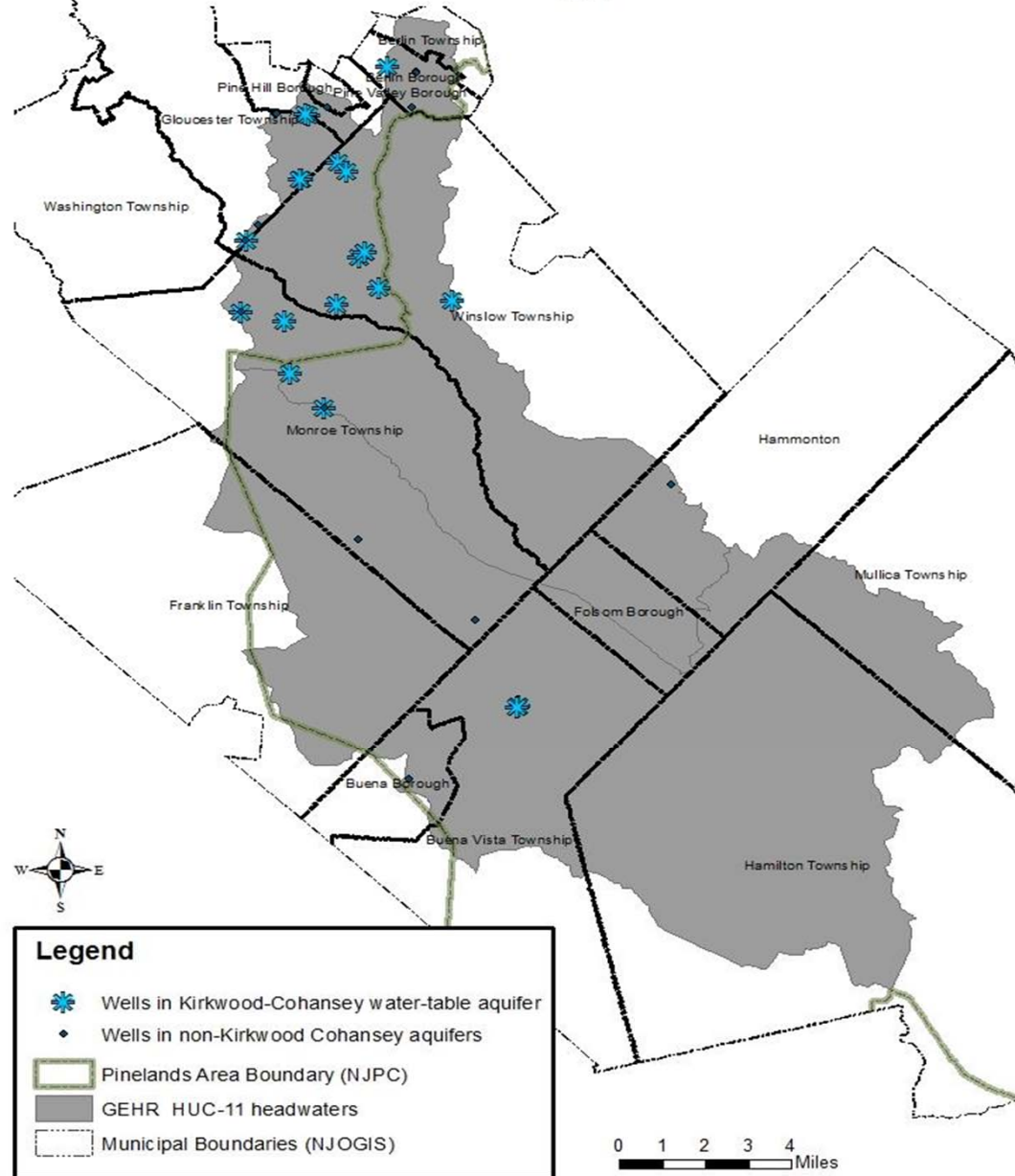
# Reasons for Amendment

- Winslow planning for growth and requesting credit for water conservation success
- Pinelands staff concurs with conservation credit and looks to further protect the watershed
- New information about ecological impacts from the 2017-2022 New Jersey Water Supply Plan

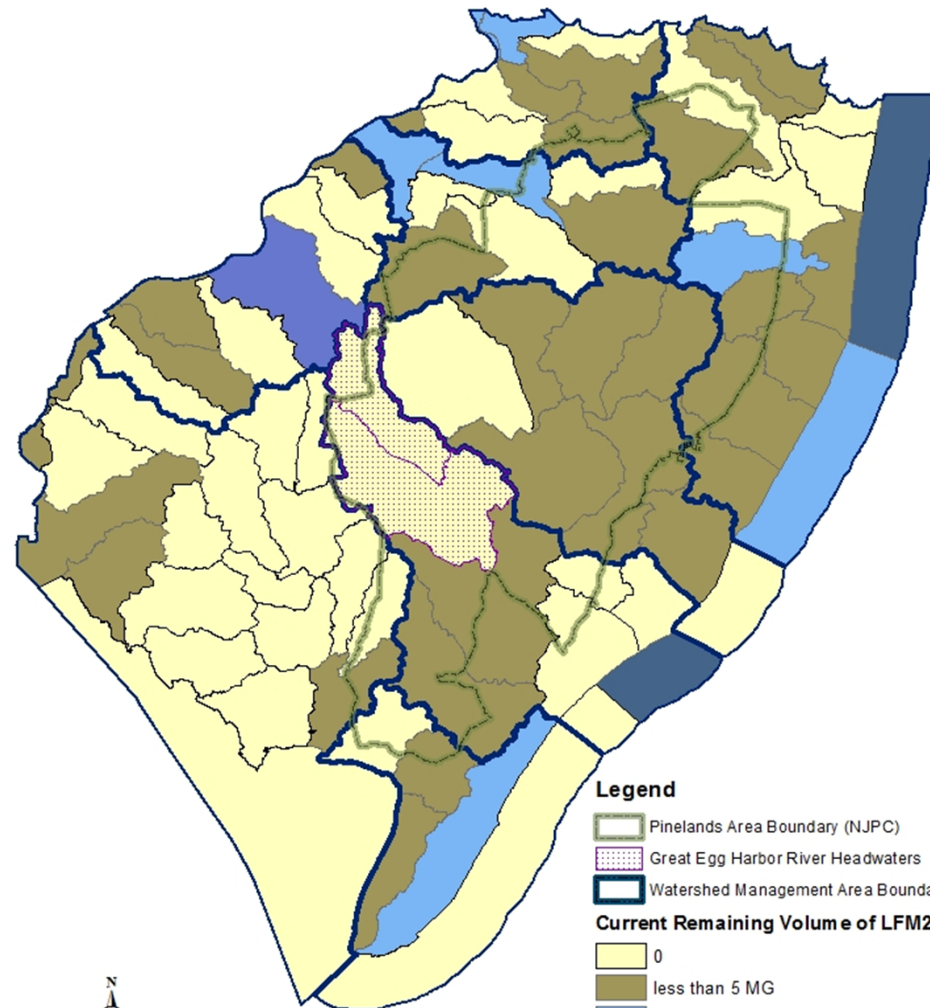
# Winslow K/C Water Conservation Results (2006-2016)



# Kirkwood Cohansey Wells in the Headwaters of the Great Egg Harbor River Basin



# Water Supply Plan Currently Stressed HUC-11 Watersheds

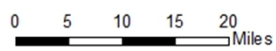


## Legend

- Pinelands Area Boundary (NJPC)
- Great Egg Harbor River Headwaters
- Watershed Management Area Boundary

## Current Remaining Volume of LFM25

- 0
- less than 5 MG
- 5-10 MG
- 10 - 25 MG
- greater than 25 MG



# Summary of MOU Benefits

<u>Benefits of MOU</u>	<u>Beneficiaries:</u>	<u>Benefits of Amended MOU</u>	<u>Beneficiaries:</u>
1. End of pollution from of STP Recharge facility	<b>Pinelands Watershed</b>		
2. Wastewater Treatment Savings	<b>CCMUA</b>		
3. Offset of infiltration by 1.5 mgs of non-K/C water	<b>Pinelands Watershed</b>		
4. Removal of sewer ban on Township permitting ratable and PDC use growth	<b>Pinelands Watershed &amp; Winslow Twp</b>		
5. Substantial on-going water use savings through conservation	<b>Pinelands Watershed &amp; Winslow Twp</b>	"Conservation Credit" = cost savings until credit is used up	<b>Winslow Twp.</b>

# Summary of MOU Benefits

<u>Benefits of MOU</u>	<u>Beneficiaries:</u>	<u>Benefits of Amended MOU</u>	<u>Beneficiaries:</u>
6. Well Management System e.g., in time of drought	<b>Pinelands Watershed</b>		
7. Protection of watershed in future through non K/C water purchases	<b>Pinelands Watershed</b>	New watershed work group to investigate and reduce impact of existing uses	<b>Pinelands Watershed</b>
8. Infiltration and inflow (I&I) reductions to sewer lines reduce stress on aquifer	<b>Pinelands Watershed &amp; Winslow Twp &amp; CCMUA</b>		
9. On-going water use monitoring and transition stream impact monitoring	<b>Pinelands Watershed</b>	Peak month cap to guard against severe use during time of drought	<b>Pinelands Watershed</b>

# Next Steps (with P & I approval)

- Bring to Commission meeting December 8<sup>TH</sup>
- Forward to Winslow and CCMUA for signature if approved by Commission in December
- Initiate Work Group to develop strategies to further reduce stress on the K/C aquifer and the GEHR headwaters